

S-cape™ II MR

hand control

OPERATION GUIDE



CONTENTS

S-cape II MR Function	4
Optional "J Box" Programming Procedure	5
Powerdown Box Operation	5
S-cape II MR Programming (<i>1 hand control - 1 bed</i>)	6
S-cape II MR Programming (<i>2 hand controls - 1 bed</i>).....	7
S-cape II MR Programming (<i>1 hand control - 2 beds</i>)	8
S-cape II MR Programming (<i>2 hand controls - 2 beds</i>)	9
S-cape II MR Reprogramming (<i>separating 2 beds</i>).....	10

S-CAPE II MR FUNCTION

IMPORTANT INFORMATION

READ ADVISORY INFORMATION IN THE OWNERS MANUAL CAREFULLY BEFORE USING THIS PRODUCT. THE POTENTIAL FOR ELECTRICAL SHOCK EXISTS IF ELECTRICAL COMPONENTS ARE NOT INSTALLED OR OPERATED PROPERLY.

S-CAPE II MR OPERATION

Refer to the matrix below for location and explanation of the S-cape II MR hand control buttons:

POSITION BUTTONS

Press and release position button and the bed will automatically move to selected position. To stop bed while in motion press and hold any button until the bed stops.

HEAD & FOOT UP/DOWN BUTTON

Adjusts the head & foot sections of the bed to the desired position.

S BUTTON

Once the desired position of head, foot, massagers and wave have been made, press and hold the SET button for 2 seconds to record the position.

HEAD/FOOT MASSAGE ARROW BUTTONS

Slowly increases or decreases the intensity of the massager as long as the appropriate button is pressed.

MASSAGE ON/OFF BUTTONS

Turns on or off the corresponding massager. When turned on, the massage has an automatic shut off timer of 30 minutes.

WAVE ARROW BUTTONS

Once the massagers are activated and the wave feature is selected, these buttons increase or decrease the speed of the wave.

TRANSMISSION INDICATOR LIGHT

Verifies a button is being pressed and data is being sent to the bed.

LEVEL BUTTON

To level the bed to the flat position press and release the LEVEL button. This button will also turn off the massagers. To stop bed while in motion, press and hold any button until bed stops.

P BUTTON

To recall the beds saved position, press and release the P button. To stop the bed while in motion, press and hold any button until bed stops moving.

WAVE ON/OFF BUTTON

Once one or both massagers are activated, this button turns the wave feature on and off.



NOTE

HAND CONTROL REQUIRES FOUR (4) AAA SIZE BATTERIES. TO CONSERVE BATTERY LIFE, THE TRANSMITTER TURNS OFF ALL FUNCTIONS WHEN ANY BUTTON IS PRESSED FOR MORE THAN 50 SECONDS.

OPTIONAL "J BOX" PROGRAMMING PROCEDURE

ALTERNATE "J BOX" PROGRAMMING

For adjustable beds equipped with "J box" only—no power down box.

When programming the hand control, unplug the adjustable bed electrical power cord. Wait 30 seconds, then plug the cord back in to the power source. This simple process automatically sets the bed to the program mode for 90 seconds. For convenience, use this procedure in lieu of pressing the *learn button* (located on the J Box, mounted to the underside of the bed base frame).

At any point where "**press the learn button**" is designated, disconnecting and reconnecting the electrical power cord will achieve the same function. Note that this alternate programming feature is only applicable to beds without a power down box. Power down equipped adjustable beds require use of the *learn button* when programming the hand control.

POWERDOWN BOX OPERATION

In case of a power outage, press and hold the *learn button* on the power down box to lower the bed to the flat position (**FIGURE 1**).

This function is only for lowering the bed and will not operate the bed to any other position. The (2) 9 volt batteries should be replaced after this function is used.

In the event the powerdown feature does not work, check to make sure the (2) 9 volt batteries are good.

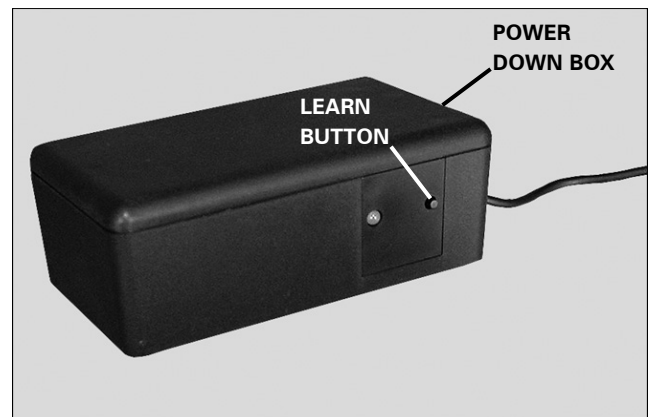


FIGURE 1: Power down box learn button.

S-CAPE II MR PROGRAMMING 1 hand control - 1 bed

The two step procedure below is required to program 1 hand control to operate 1 bed. Before beginning, make certain the bed is plugged into a working grounded electrical outlet.

STEP 1

On bed 1, press the *learn button* for 1 second and release. The bed will be equipped with either a *power down box* or *J box* (FIGURE 1).

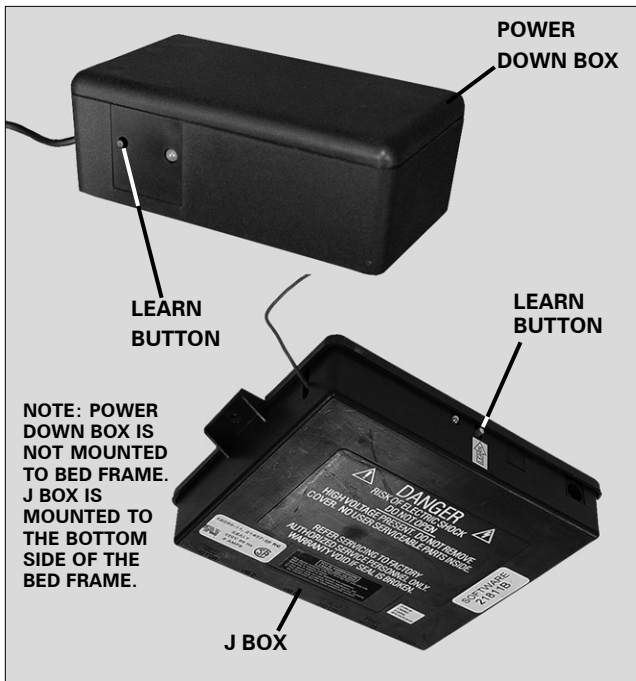
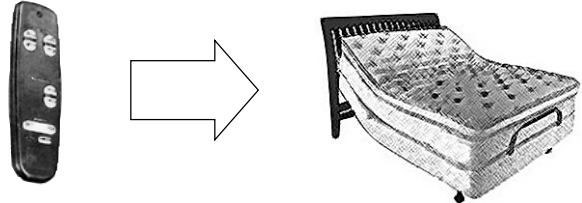
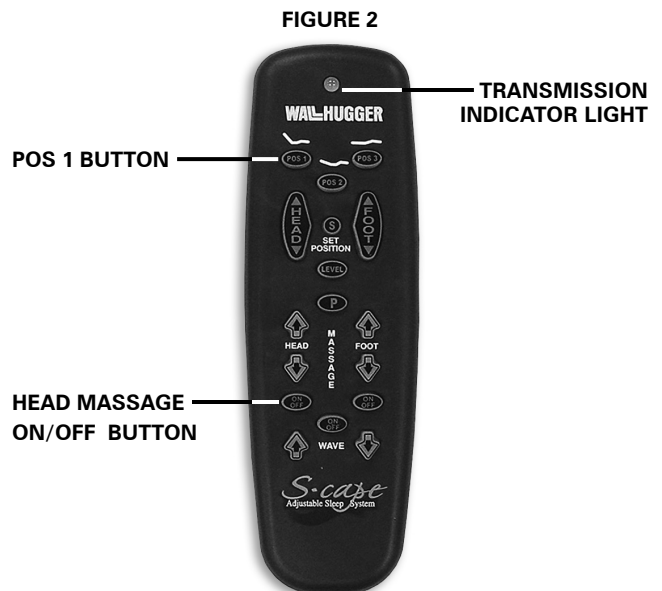


FIGURE 1: Power down box and J box receiver units.

STEP 2

Simultaneously press and hold the *Pos 1* and the *head massage on/off* buttons. The transmission indicator light will flash slowly and then flash rapidly. Continue to hold for 2 seconds and then release the buttons (FIGURE 2).



One hand control is now programmed to operate one bed.

S-CAPE II MR PROGRAMMING 2 hand controls - 1 bed

The three step procedure below is required to program 2 hand controls to operate 1 bed. Before beginning, make certain the bed is plugged into a working grounded electrical outlet.

STEP 1

On bed 1, press the *learn button* for 1 second and release. The bed will be equipped with either a *power down box* or *J box* (FIGURE 1).

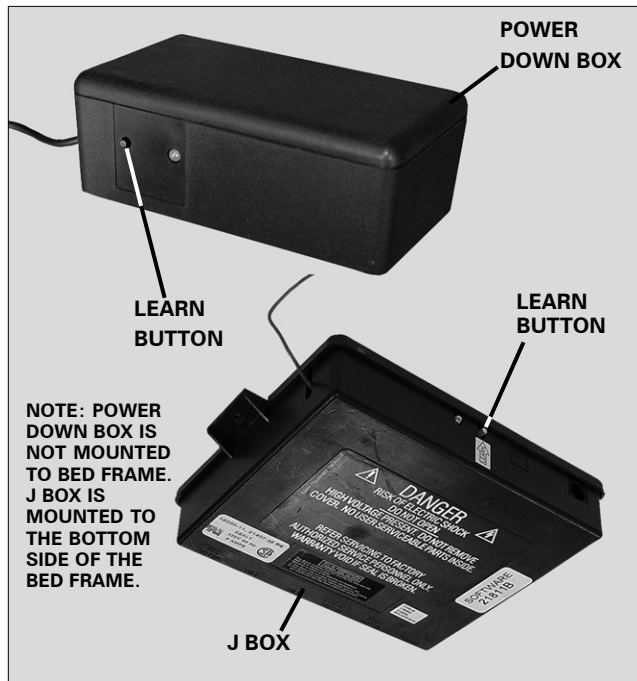
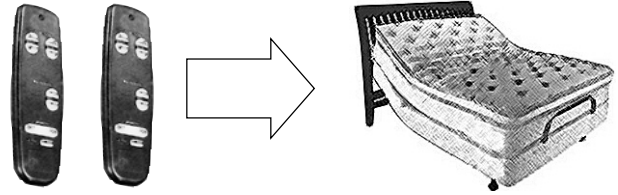


FIGURE 1: Power down box and J box receiver units.

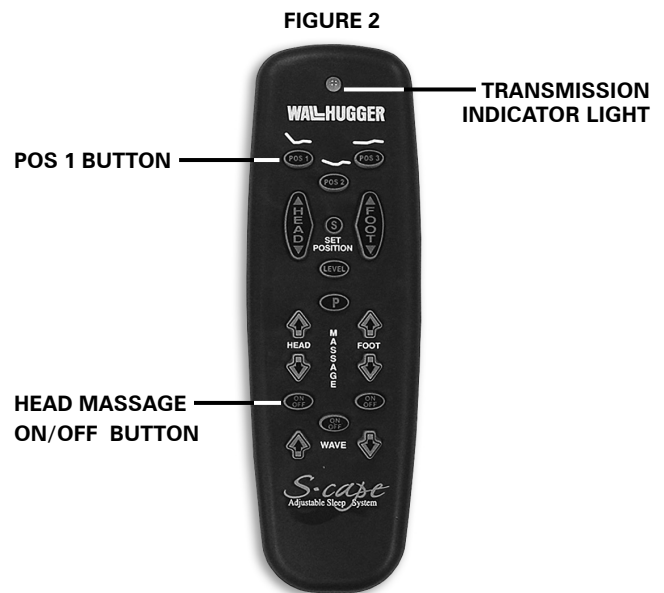
STEP 2

Simultaneously press and hold the *Pos 1* and the *head massage on/off* buttons. The transmission indicator light will flash slowly and then flash rapidly. Continue to hold for 2 seconds and then release the buttons (FIGURE 2).

STEP 3

Repeat **Step 1** and **Step 2** with hand control 2.

Two hand controls are now programmed to operate one bed.



S-CAPE II MR PROGRAMMING 1 hand control - 2 beds

The three step procedure below is required to program 1 hand control to operate 2 beds. Before beginning, make certain the beds are plugged into a working grounded electrical outlet.

STEP 1

On bed 1, press the *learn button* for 1 second and release. The bed will be equipped with either a *power down box* or *J box* (FIGURE 1).

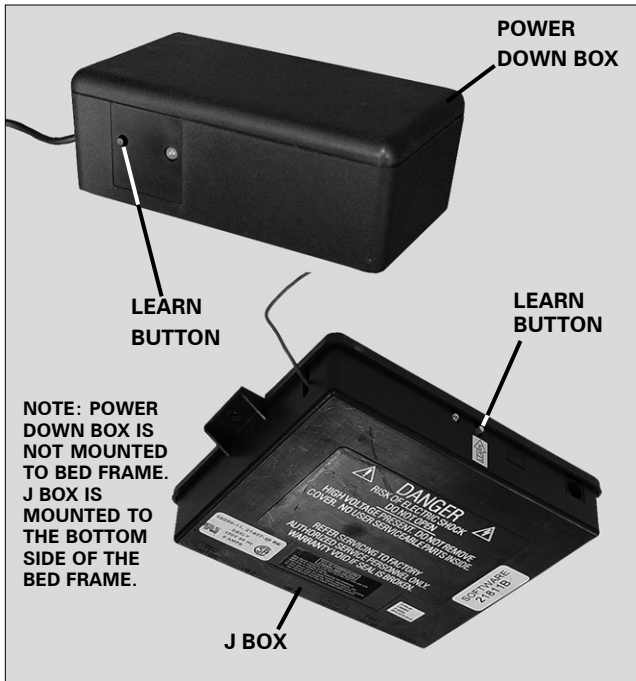


FIGURE 1: Power down box and J box receiver units.

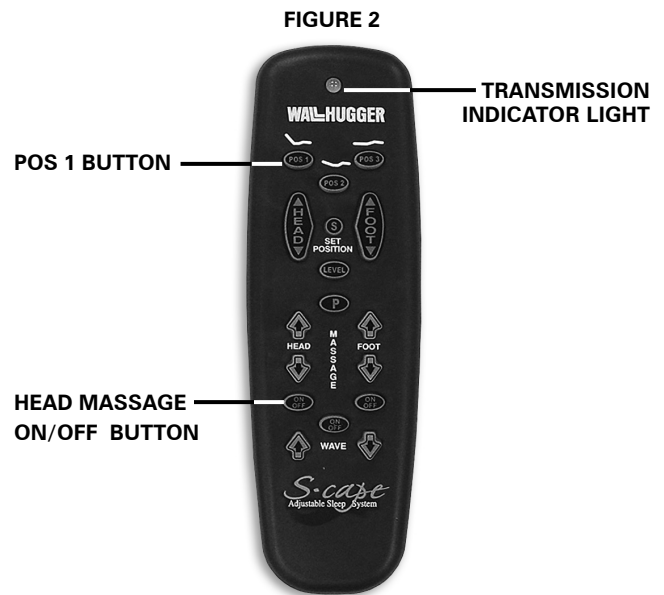
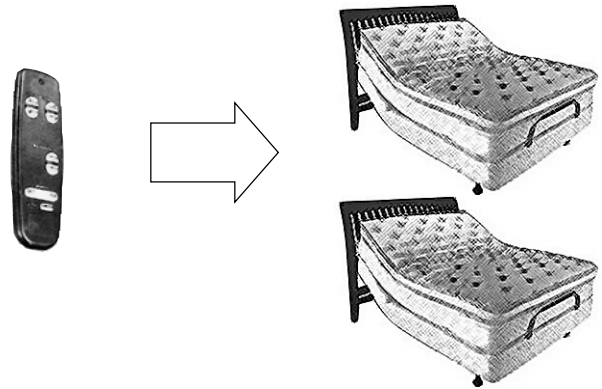
STEP 2

Simultaneously press and hold the *Pos 1* and the *head massage on/off* buttons. The transmission indicator light will flash slowly and then flash rapidly. Continue to hold for 2 seconds and then release the buttons (FIGURE 2).

STEP 3

Repeat **Step 1** and **Step 2** for bed 2.

One hand control is now programmed to operate two beds.



S-CAPE II MR PROGRAMMING 2 hand controls - 2 beds

The six step procedure below is required to program 2 hand controls to operate 2 beds. Before beginning, make certain the beds are plugged into a working grounded electrical outlet.

STEP 1

On bed 1, press the *learn button* for 1 second and release. The bed will be equipped with either a *power down box* or *J box* (FIGURE 1).

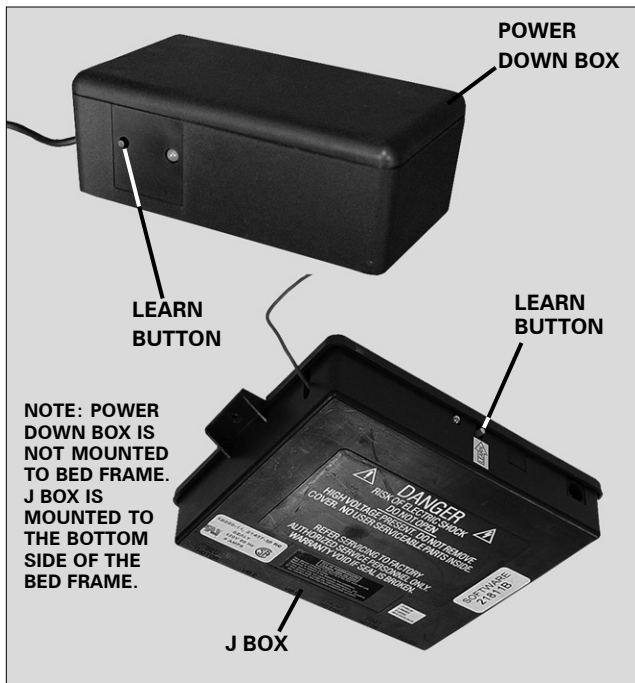


FIGURE 1: Power down box and J box receiver units.

STEP 2

On hand control 1, simultaneously press and hold the *Pos 1* and the *head massage on/off* buttons. The transmission indicator light will flash slowly and then flash rapidly. Continue to hold for 2 seconds and then release the buttons (FIGURE 2).

STEP 3

Repeat **Step 1** and **Step 2** with hand control 2.

STEP 4

On bed 2, press the *learn button* for 1 second and release. The bed will be equipped with either a *power down box* or *J box* (FIGURE 1).

STEP 5

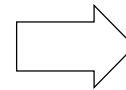
On hand control 1, simultaneously press and hold the *Pos 1* and the *head massage on/off* buttons. The transmission indicator light will flash slowly and then flash rapidly. Continue to hold for 2 seconds and then release the buttons (FIGURE 2).

STEP 6

Repeat **Step 4** and **Step 5** with hand control 2.

Two hand controls are now programmed to operate two beds.

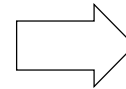
HAND CONTROL



BED 1



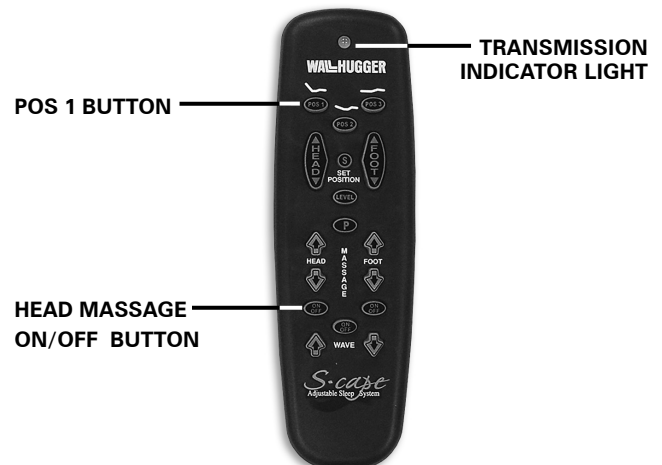
HAND CONTROL



BED 2



FIGURE 2



S-CAPE II MR REPROGRAMMING *separating 2 beds*

The six step procedure below is required to separate 2 hand controls from operating 2 beds. One hand control per bed operation will result. Before beginning, make certain the beds are plugged into a working grounded electrical outlet.

STEP 1

On bed 1, press the *learn button* for 1 second and release. The bed will be equipped with either a *power down box* or *J box* (FIGURE 1).

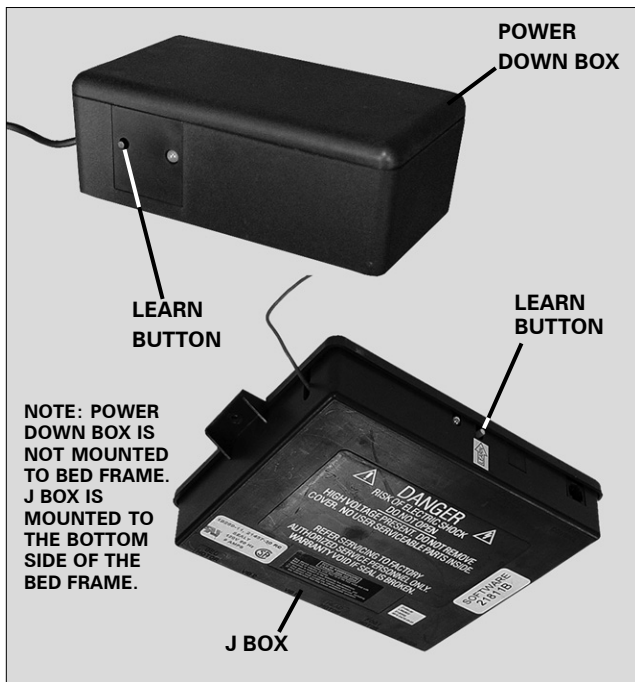


FIGURE 1: Power down box and J box receiver units.

STEP 2

On hand control 1, simultaneously press and hold the *Pos 1* and the *head massage on/off* buttons. The transmission indicator light will flash slowly and then flash rapidly. Continue to hold for 2 seconds and then release the buttons (FIGURE 2).

STEP 3

Repeat **Step 1** and **Step 2** with hand control 1. **Note: wait 90 seconds before proceeding to Step 4.**

STEP 4

On bed 2, press the *learn button* for 1 second and release. The bed will be equipped with either a *power down box* or *J box* (FIGURE 1).

STEP 5

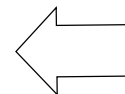
On hand control 2, simultaneously press and hold the *Pos 1* and the *head massage on/off* buttons. The transmission indicator light will flash slowly and then flash rapidly. Continue to hold for 2 seconds and then release the buttons (FIGURE 2).

STEP 6

Repeat **Step 4** and **Step 5** with hand control 2.

Independent hand control operation is now restored (hand control 1 operating bed 1; hand control 2 operating bed 2).

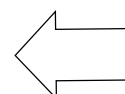
HAND CONTROL



BED 1



HAND CONTROL



BED 2



FIGURE 2

